

IMI ADODB Message Store

(DEMO application)

The IMIMSP32 is a sample message store that uses Microsoft Office Access 2000/2003 MDB or Microsoft SQL Server 2000/2005 (incl. Express Edition) as backend store.

Supported Features

Basic operations.

The message store supports:

- reading, creating, modifying, and deleting messages;
- browsing, creating, and deleting folders;
- submitting outbound message to transports;
- and associating all types of attachments with messages.

Multivalued properties are supported for all objects. The message store can be used as a default message store for a MAPI client (please call for more info)

Copy operations.

The sample message store supports moving and copying messages and folders. These operations are delegated to MAPI support functions unless an operation occurs entirely within one message store.

Event notification.

The sample message store supports event notification on tables (again, courtesy of IMAPITableData).

Named properties

GetNamesFromIDs and GetIDsFromNames methods of IMAPIProp.
Folder-associated information (MAPI_ASSOCIATED, DEL_ASSOCIATED flags).

Unsupported Features

- Searches (SetSearchCriteria method of IMAPIFolder).
- Categorization of contents tables.
- IMAPIStatus interface.

Known Problems

Reminder service doesn't work correctly.

When Microsoft Access is backend store, provider is unstable when MDB size is grown over 1 GB.

Installation

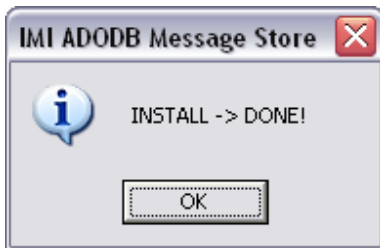
To install the IMI ADODB Message Store you have to

1. Copy IMIMSP32.dll to the windows system32 directory.
2. You have to install IMIMSP32.dll by using Start->Run "rundll32"

Please type the following by observing caps and spaces.

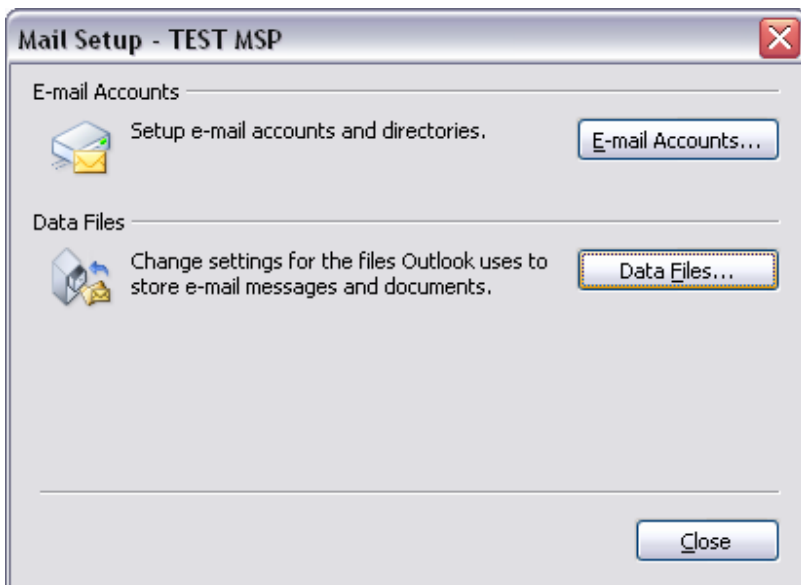
"rundll32 IMIMSP32.dll,Install"

If it is installed successfully you will see the following message.

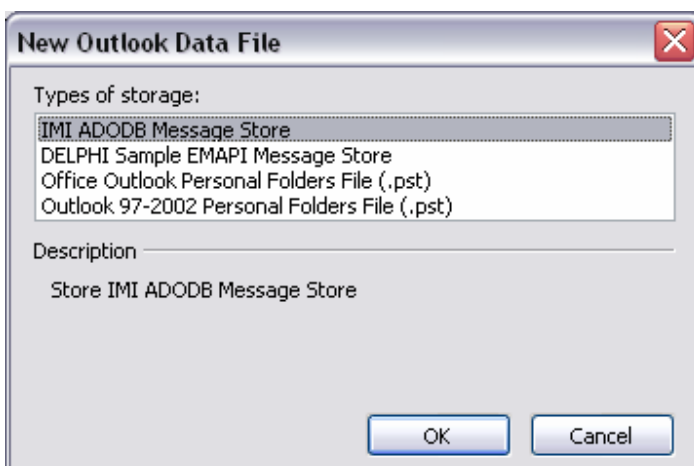


3. Start the Mail applet from the Control Panel

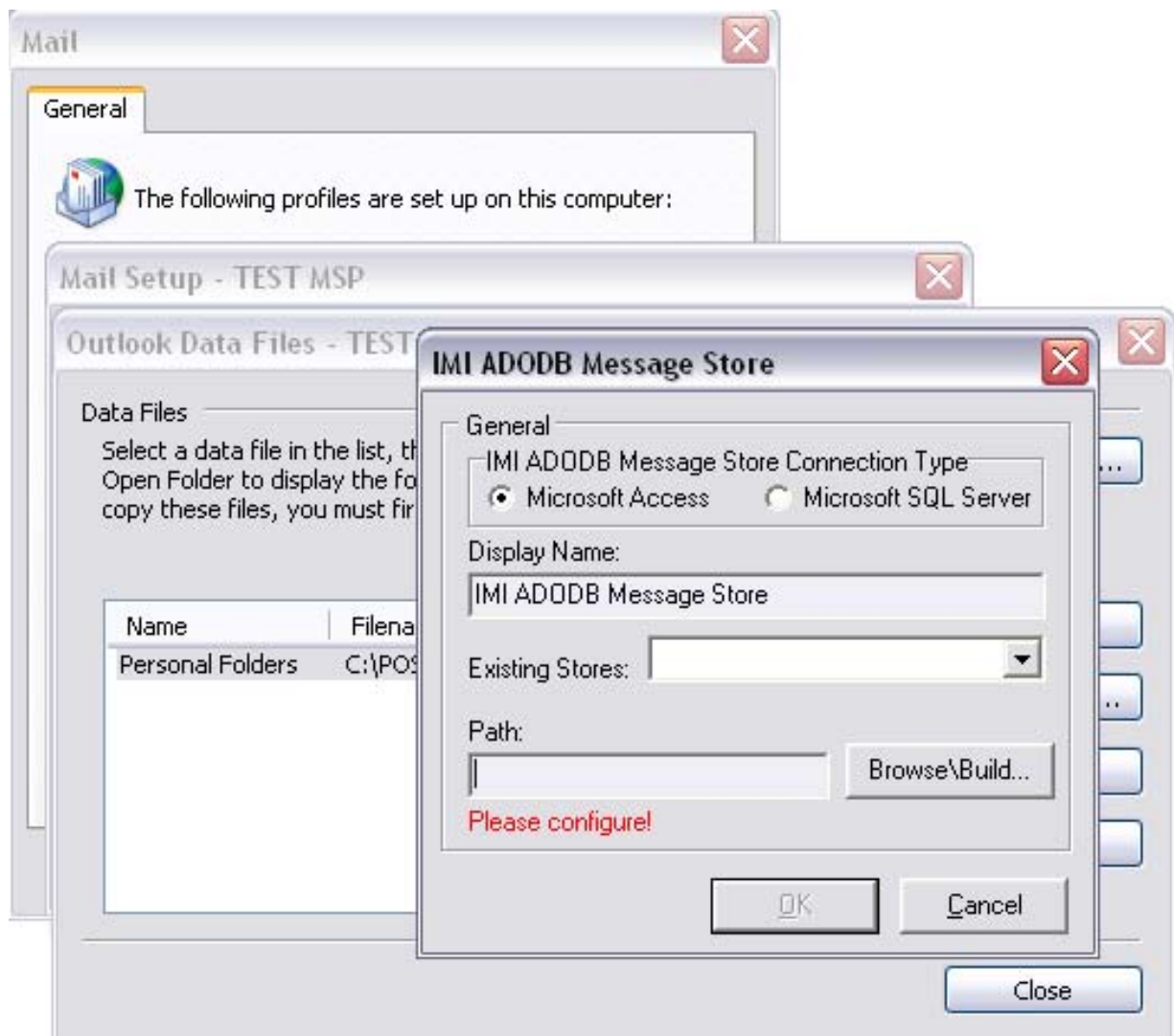
Select Data Files, Add



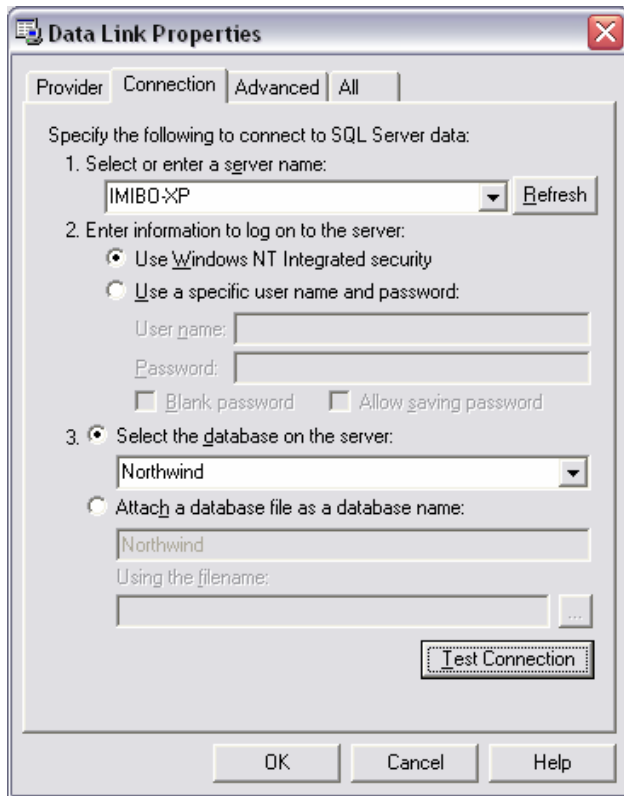
Select "IMI ADODB Message Store"



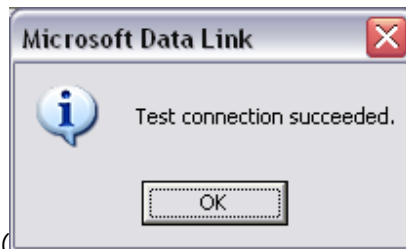
You can select Microsoft Access or SQL Server connection.



Click over "Browse\Build..." button.

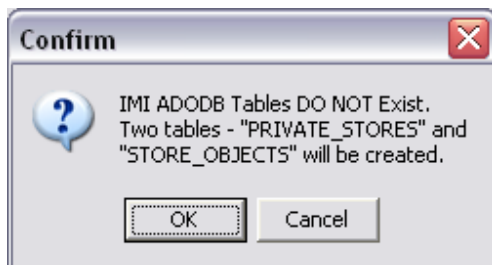


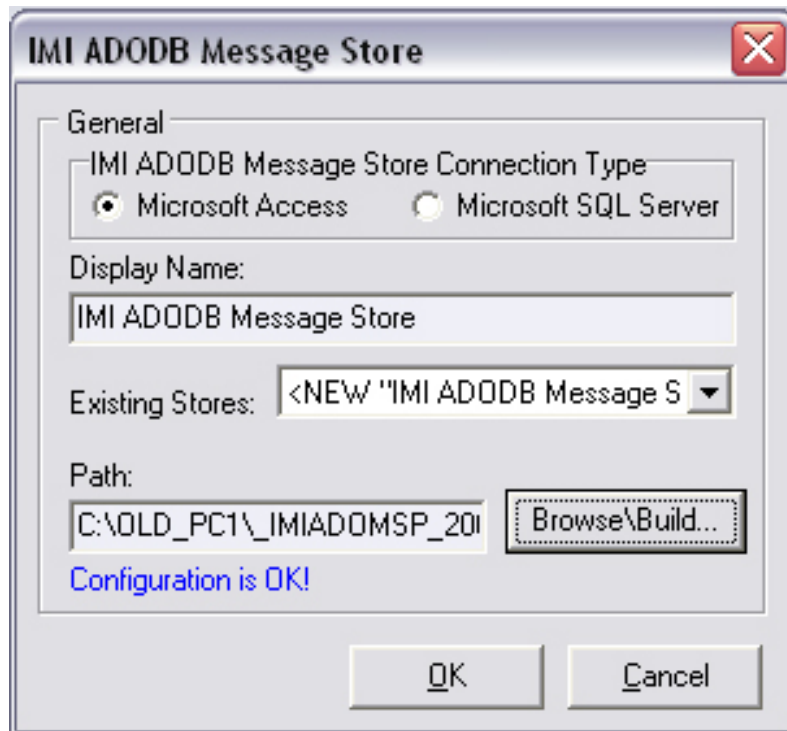
Select Server name (or MDB file), Database and please press "Test Connection".



If Data Base connection is OK, () click over "OK" button.

If "schema" tables do not exists, they will be created.





That is all.



IMIBO EOOD

<http://www.imibo.com>

To remove **IMI ADODB Message Store**, first remove the provider from all profiles where **IMI ADODB Message Store** is used as Outlook Data File.

After that you should run rundll32 as you see above, but now type
"rundll32 IMIMSP32.dll,UnInstall"

If everything is ok you should see the following message



And finally: don't forget that this is just an example, and we don't recommend using this Message store as a final product, in real situation. It is designed only to see how Outlook interacts with Service Providers and Data Bases.